

- 81 -

370-1 RUEDAS LIBRES NEUMATICAS PARA TRANSPORTADORES DE CINTA

(Pneumatic Idlers)

Anónimo.

De: "RUBBER DEVELOPMENTS", 29, diciembre 1949.

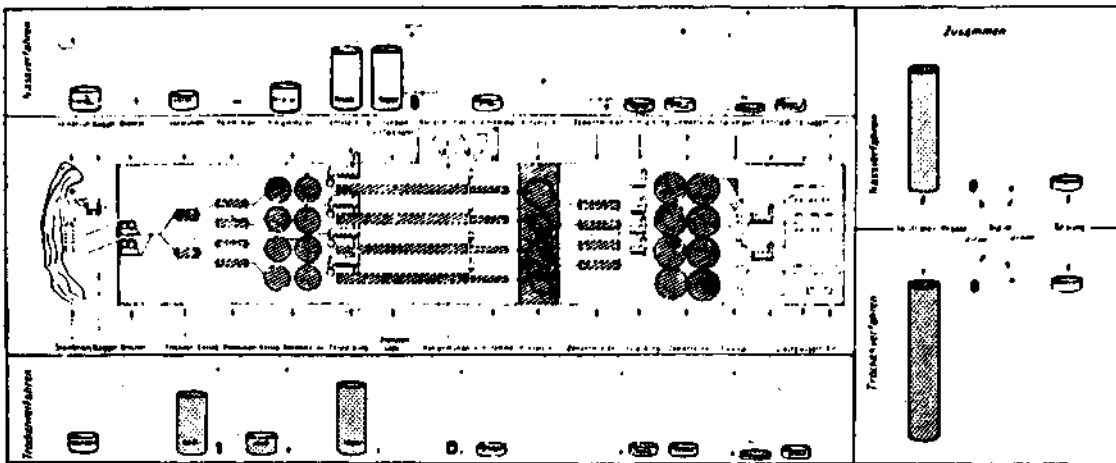
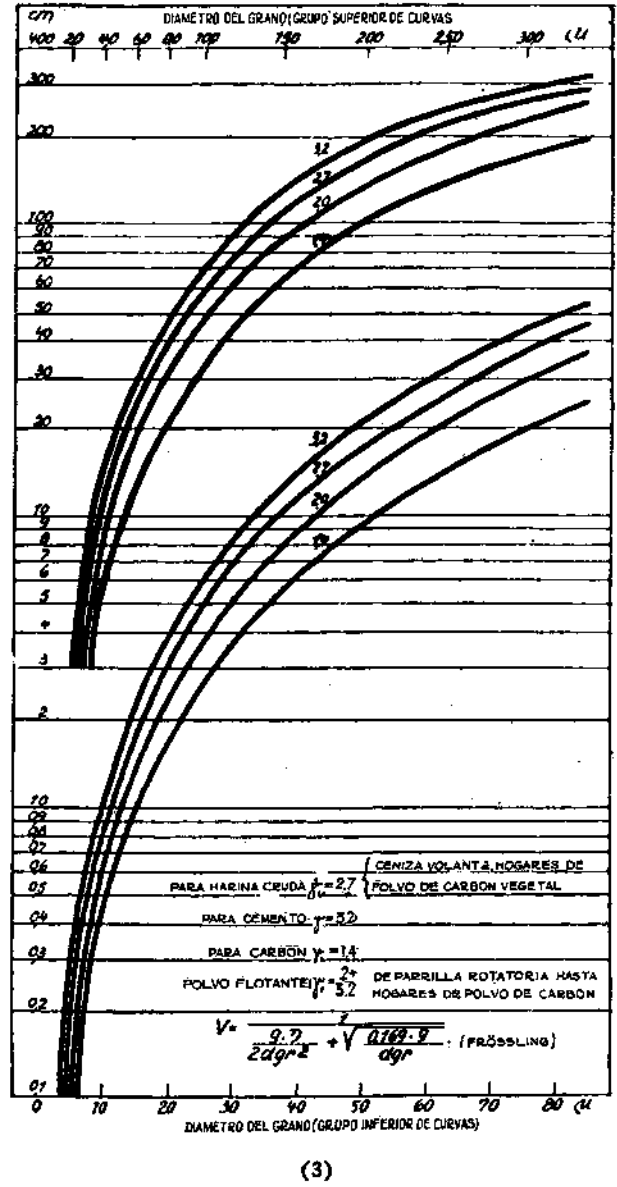
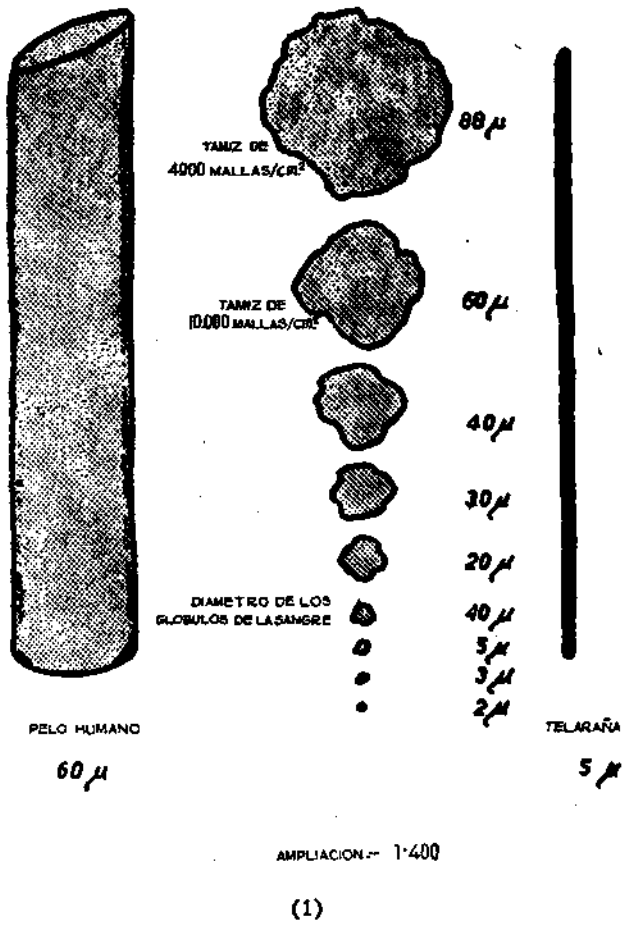
---

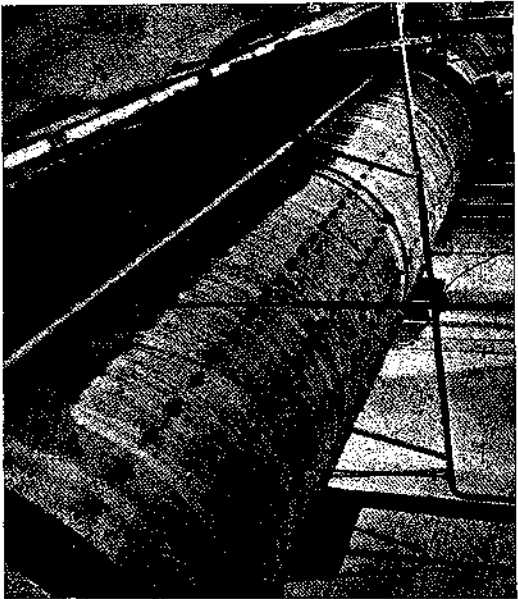
Los rodillos o soportes de ruedas locas de un transportador de cinta, pueden sustituirse por ruedas de automóvil. La cinta de transporte se adapta bien a estas ruedas que, como puede verse en la fig. 24 se colocan por parejas. Se trata de neumáticos de avión del tamaño 6.00 x 6 que tienen pequeño diámetro y son capaces de absorber choques de magnitud considerable.

Huelga decir que el funcionamiento de las cintas transportadoras así soportadas, es sumamente suave y silencioso, cosa desconocida en los demás sistemas mecánicos.

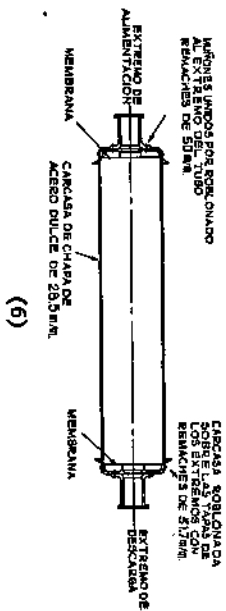
---

- INSTITUTO TECNICO DE LA CONSTRUCCION Y DEL CEMENTO -

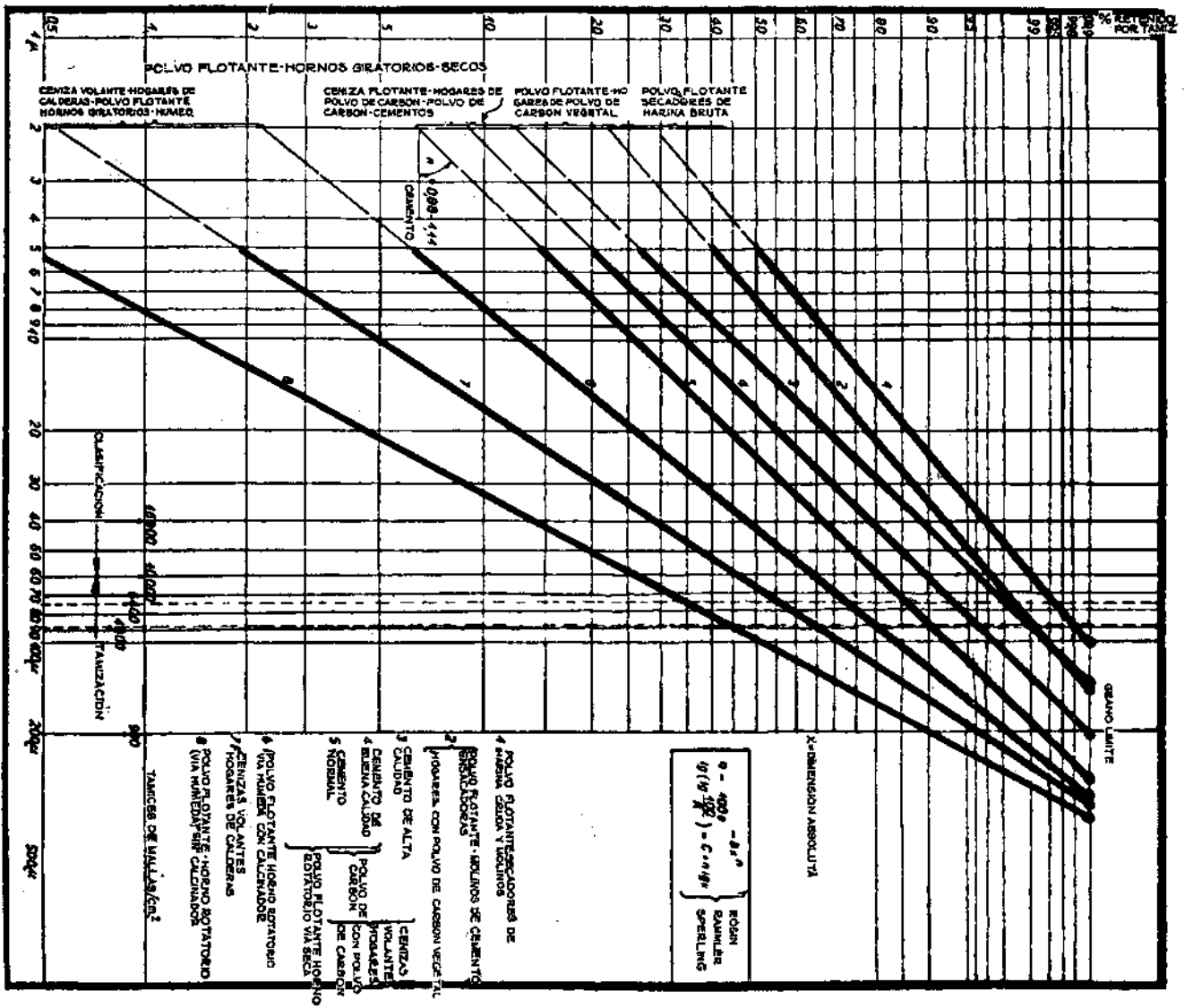




(5)



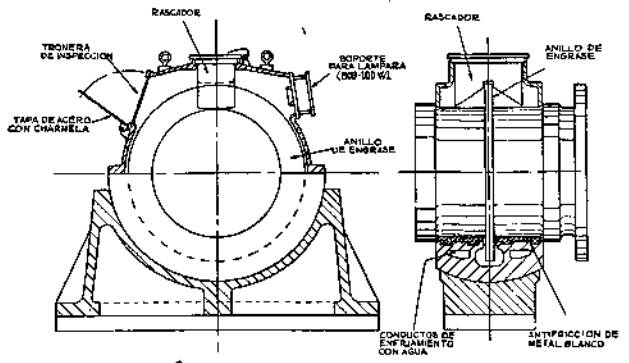
(6)



(2)



(7)



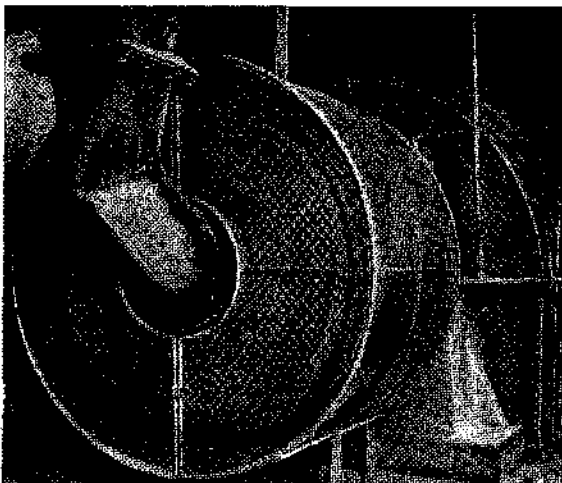
(8)



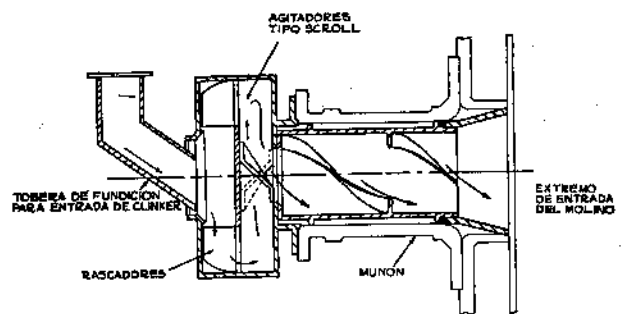
(9)



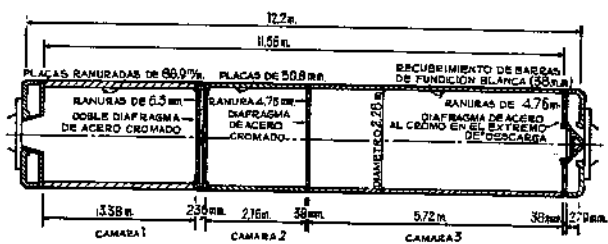
(10)



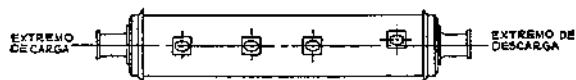
(11)



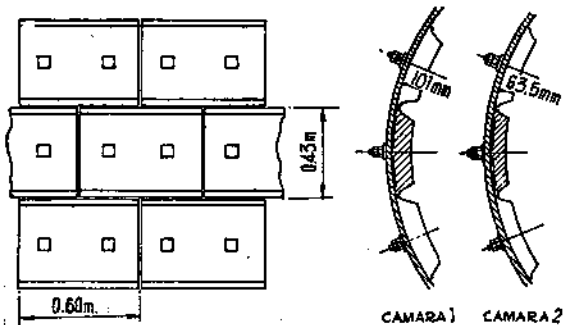
(12)



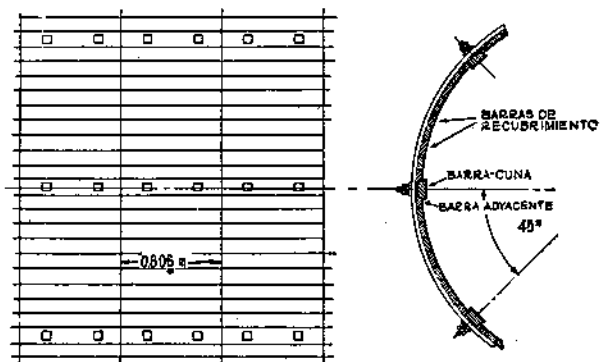
(13)



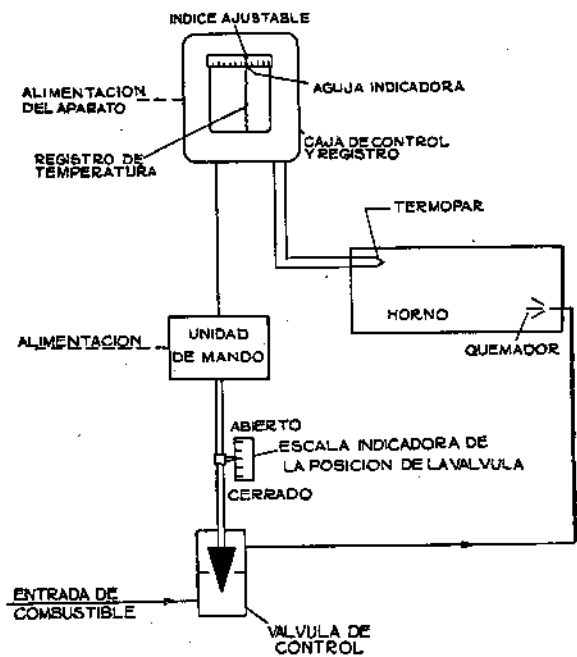
(14)



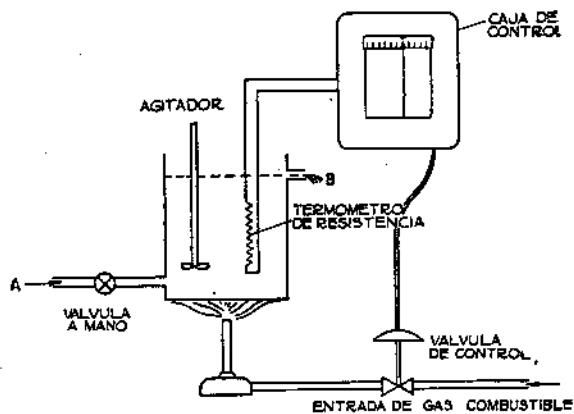
(15)



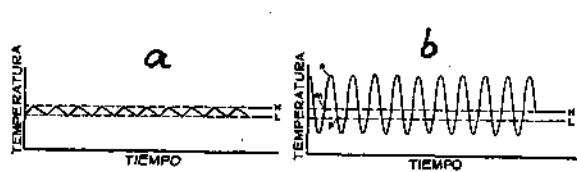
(16)



(17)



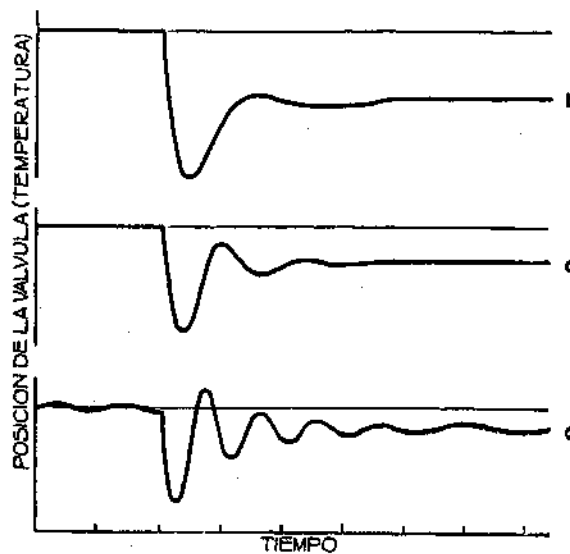
(18)



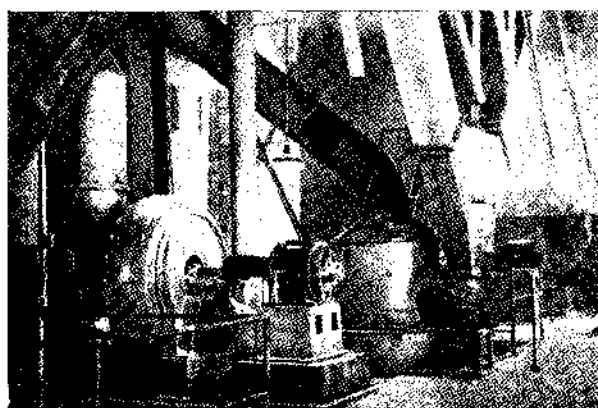
(19)



(21)



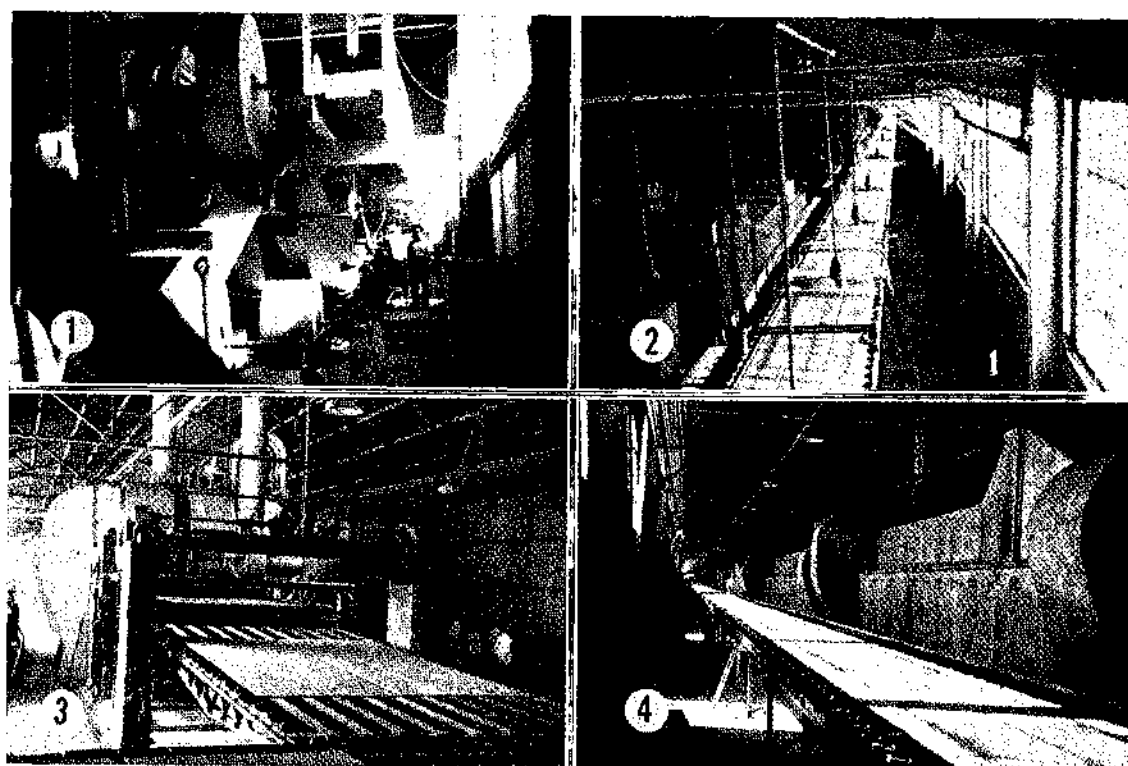
(20)



(22)



(24)



(23)